

# OctopusWatch energy report

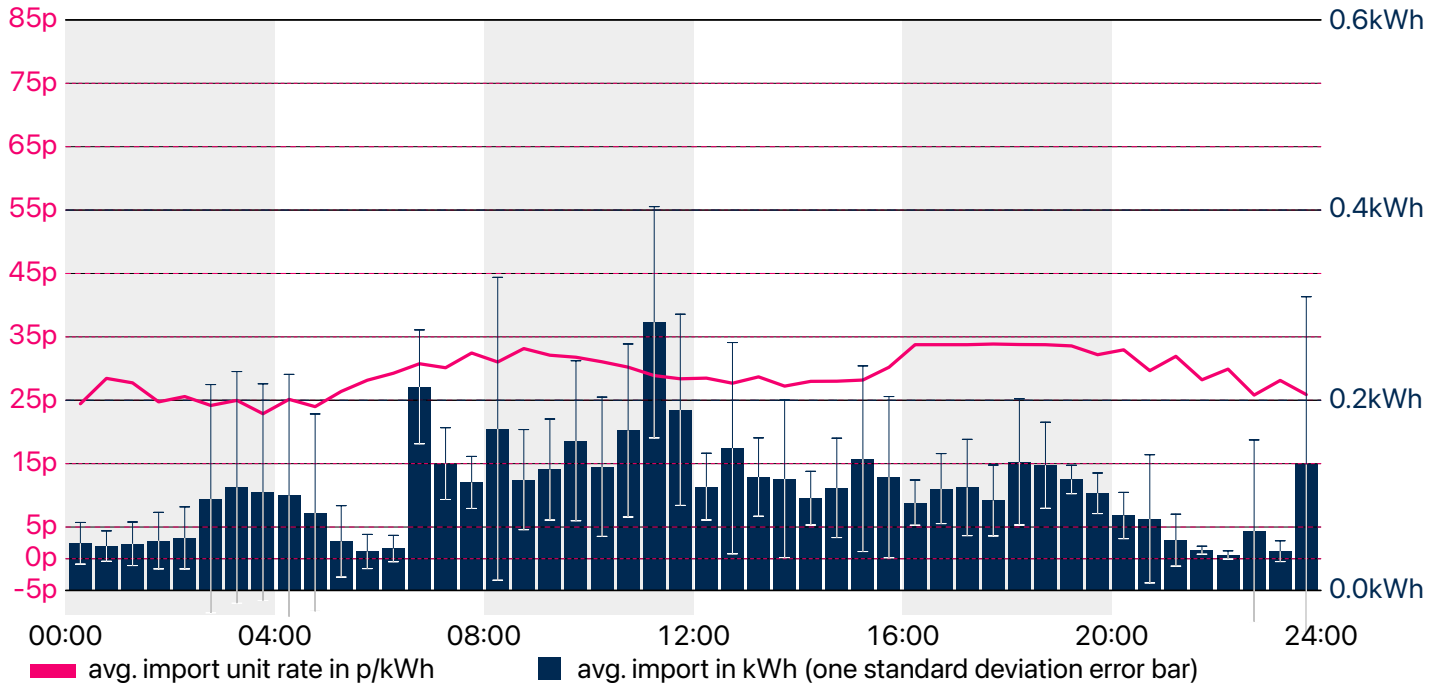


1st Feb 2023 – 28th Feb 2023 (28 days)

Your **total electricity cost** is **£54.38** inc 5% VAT.

The unit consumption cost is £40.65 inc VAT.

The standing charge cost is £13.73 inc VAT.



Your electricity **usage** is **STABLE** during this period.

Your electricity **cost** is **STABLE** during this period.

You have a **total consumption** of **141.4kWh**.

Your average **unit rate** is **28.74p/kWh**.

Your average **factual unit rate** is **38.45p/kWh** (includes your standing charge).

Your average **standing charge** is **49.02p/day**.

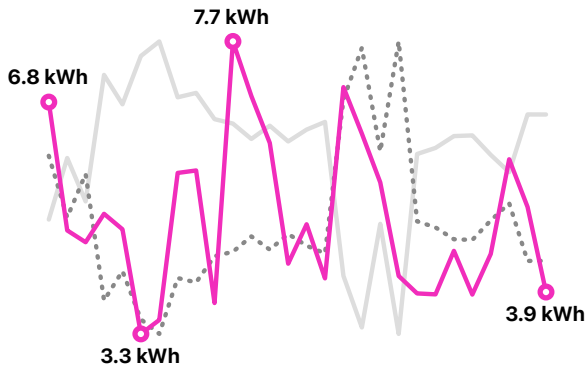
Your **national carbon footprint** is **23.24kgCO<sub>2</sub>**, or 168gCO<sub>2</sub>/kWh.

Your **regional carbon footprint** is **4.10kgCO<sub>2</sub>**, or 30gCO<sub>2</sub>/kWh.

Both the national carbon footprint (across Great Britain) as well as your regional footprint (for your distribution area) is calculated. An average value between 0-59gCO<sub>2</sub>/kWh is very low, 60-159gCO<sub>2</sub>/kWh is low, 160-259gCO<sub>2</sub>/kWh is average, 260-359gCO<sub>2</sub>/kWh is high, and 360gCO<sub>2</sub>/kWh or more is very high. You can improve your carbon footprint by avoiding peak hours, reducing your base load, and planning consumption when carbon intensity on the grid is the lowest.

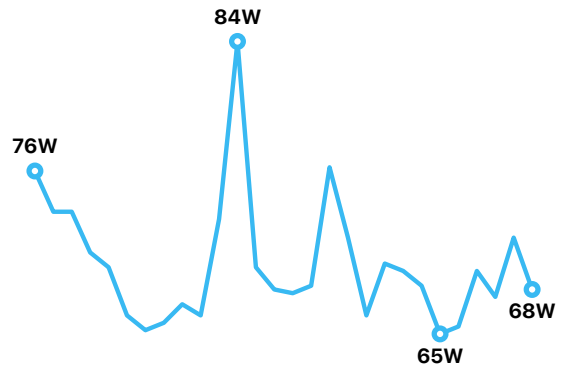
Your estimated **base load** is **69W**, totalling **46.4kWh**.

This is an estimate of the amount of electricity used when you are not actively using anything. This includes devices that are kept running all the time such as routers and fridges, smart lights, standby power for plugged in appliances, etc. An average home has a base load of 105–120W. Lowering your base load can make a big impact on your electricity cost and can be as simple as turning a device off at the socket when not in use.



Your electricity usage has been **STABLE**, and **somewhat follows** your tariff prices.

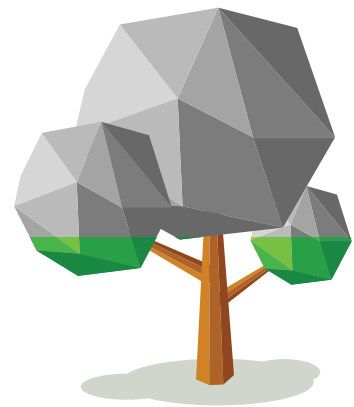
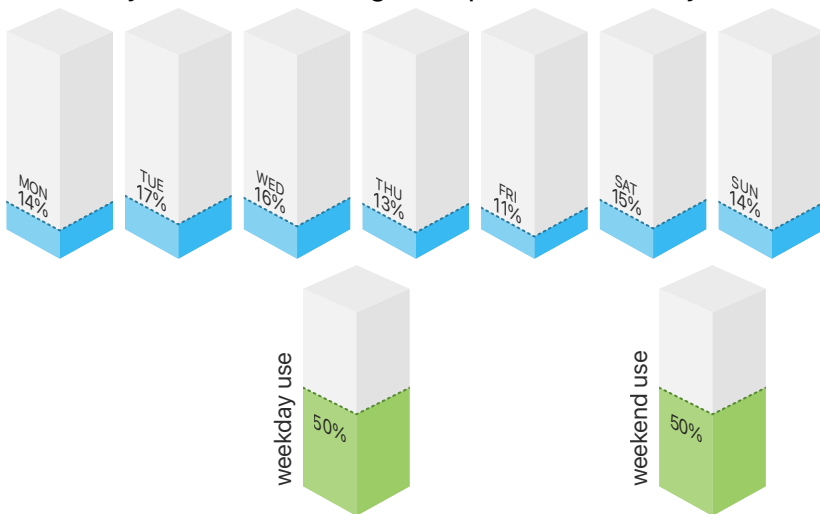
the average household in the UK has a daily electricity use of 10.2kWh



Your base load has been **STABLE**, averaging at **69W** or **1.7 kWh/day**.

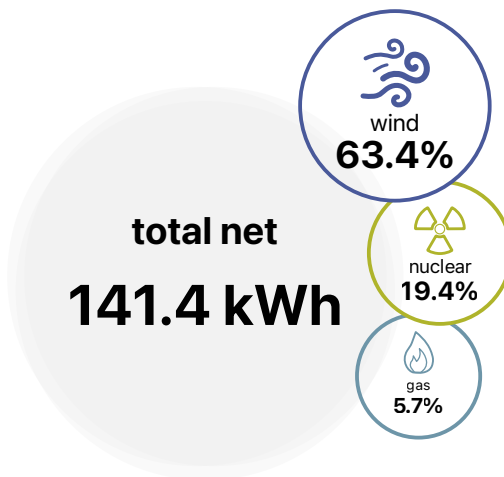
the average base load for a household in the UK is between 105–120W

Your usage **throughout the week**, and how your weekend usage compares to weekdays.



Through load shifting, you **saved 0.3kgCO<sub>2</sub>**, the same as **0.2 trees!**

compared to national CO<sub>2</sub>, assuming a grown tree absorbs 21kgCO<sub>2</sub>/year



report from **1st Feb 2023**

report to **28th Feb 2023**

total of 28 days

**total cost**  
**£54.38**

need help?



smarthound.uk/RAA

Octopus**Watch**  
energy report

